



**DLW Linoleum**

**Creative by Nature**

**Gerflor®**

# DLW Linoleum Creative by Nature

# 98%

naturbasiert /  
natural / naturel

# 76%

Schnell nachwachsend  
Rapidly renewable  
Renouvelable rapidement

Bis zu /  
Up to /  
Jusqu'à **40%**

Recyclinganteil  
Recycled content  
Contenu recyclé

<b>41 %</b> Leinöl Linseed oil Huile de lin	<b>20 %</b> Holzmehl Wood flour Bois	<b>19 %</b> Kalkstein Limestone Charge minérale
--	---	--



<b>8 %</b> Jute	<b>5 %</b> Harz Resin Résine	<b>3 %</b> Farbpigmente Coloured pigments Pigments colorés
--------------------	---------------------------------------	---



**2 %**  
Kork  
Cork  
Liège



Jede Entscheidung zählt, wenn es darum geht, wertvolle Ressourcen zu schonen und dem Klimawandel entgegenzuwirken. DLW Linoleum ist eine zu 98 % auf natürlichen Rohstoffen basierende und kreislauffähige Bodenbelagslösung mit einem sehr geringen CO<sub>2</sub>-Fußabdruck.

*To fight climate emergency and natural resources depletion, every choice counts. DLW Linoleum is a 98% natural, low carbon and circular flooring solution.*

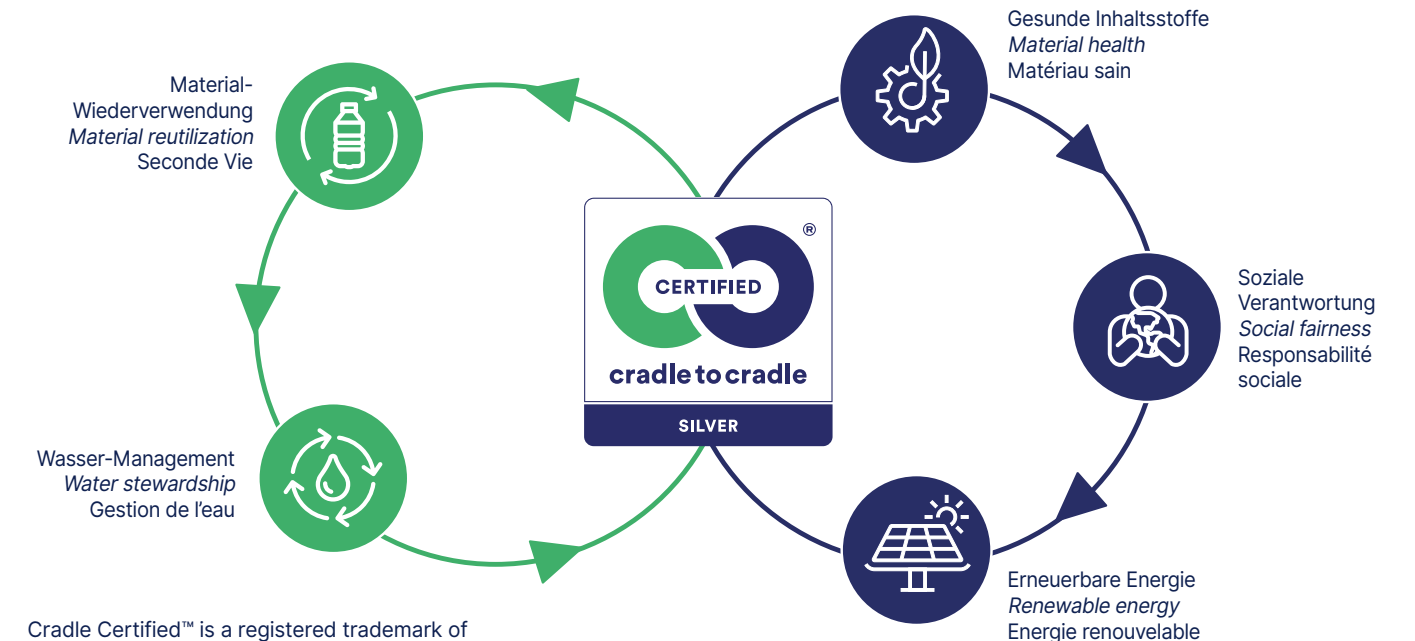
Face à l'urgence climatique et à la raréfaction des ressources naturelles, chaque choix compte. DLW Linoleum est un sol 98% naturel, bas carbone et circulaire.

we care / we act

# Sustainable by Nature

**Cradle to Cradle**  
Zertifiziert™ / Certified™ / Certifié™ SILVER<sup>(1)</sup>

Entwickelt nach den Prinzipien der Kreislaufwirtschaft  
Developed using circular economy principles  
Développé selon les principes de l'économie circulaire



Cradle Certified™ is a registered trademark of the Cradle to Cradle Products Innovation Institute.

## Carbon neutral<sup>(2)</sup>



Die durch ein unabhängiges Institut erstellte EPD weist in den ersten Phasen des Lebenszyklus eine absolute CO<sub>2</sub>-Neutralität aus.  
Third party certified EPD indicates carbon neutrality during the first stages of its life cycle.  
DLW Linoleum affiche un très faible impact carbone<sup>(3)</sup> - FDES sur [www.inies.fr](http://www.inies.fr)

## 100 % recyclable



Alle Bodenbeläge von Gerflor sind zu 100 % recycelbar und lassen sich über das **Gerflor Second Life Rücknahme- und Recycling-Programm in den Wertstoffkreislauf zurückführen**. Eine kostenlose Abholung von Verschnittresten ist bereits in zehn Ländern möglich.  
*All Gerflor floorings are 100% recyclable and eligible to Gerflor Second Life collection and recycling program. Free collection of installation waste is available in 10 countries.*  
Tous les sols Gerflor sont éligibles au **programme de collecte et de recyclage Seconde Vie Gerflor**. Gerflor est leader du recyclage vinyle en France avec 70% des sols collectés (source syndicale 2022).

(1) Marmorette, Colorette, Uni Walton, Linodur, Marmorette Acoustic 15dB, Lino Art. / Cradle Certified™ is a registered trademark of the Cradle to Cradle Products Innovation Institute.  
(2) Cradle to Gate: Umfasst Rohstoffe und Herstellungsprozess (Module A1-A3 der EPD). / From Cradle to Gate: includes raw materials and manufacturing process (A1-A3 stages of EPD). / «Cradle to Gate»: inclut les matières premières et le processus de fabrication (Étapes A1-A3 /EPD). Source: Environmental Product Declaration (EPD). Certified by Evec. More information on [gerflor.com](http://gerflor.com)  
(3) Voir FDES INIES pour empreinte carbone sur le cycle de vie complet du produit

# Protective by Nature

**EXCLUSIVE**



**Neuer Lösungsmittelfreier Oberflächenschutz, exklusiv für Linoleum entwickelt. Besonders strapazierfähig durch dreifache Vernetzung mittels Laser-UV-Technologie.**

New solvent-free surface protection, developed exclusively for linoleum. Extremely hard-wearing due to triple laser UV cross-linking technology. Nouvelle protection de surface sans solvant, exclusive pour le Linoleum. Traitement barrière obtenu par triple réticulation laser UV.

## Wohngesund Healthy living / Sain

### QUALITÄT DER RAUMLUFT

Sehr geringe Emissionen: TVOC nach 28 Tagen <10 Mikrogramm/m<sup>3</sup>

### AIR QUALITY

Very low emissions: TVOC after 28 days <10 microgram/m<sup>3</sup>

### QUALITÉ DE L'AIR

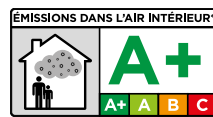
Très faibles émissions : TCOV après 28 jours <10 microgramme/m<sup>3</sup>



www.blauer-engel.de/tz120

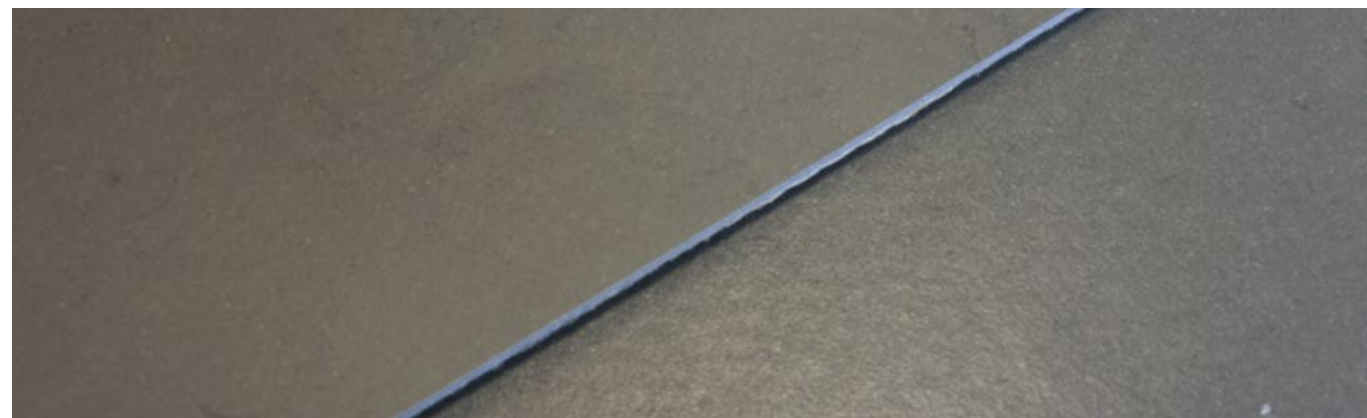


CERTIFIED BY SCS Global Services



## Natürliches Design Natural design / Décor naturel

### Matteffekt / Mat Effect / Effet Mat



LPX / PUR / Others...



## Einfache Reinigung Easy to maintain / Facile d'entretien



Standard Linoleum



NEOCARE™

### BARRIERE GEGEN SCHMUTZ UND FLECKEN

Einfache Reinigung mit einem Mopp.

### DIRT & STAIN BARRIER

Easy cleaning with a mop or any modern cleaning equipment.

### BARRIÈRE CONTRE LA SALETÉ & LES TACHES

Nettoyage facile avec une serpillère.



## Hygienische Sauberkeit Hygiene / Hygiène

**Ausgezeichnete Beständigkeit gegenüber Desinfektionsmitteln und Chemikalien.**

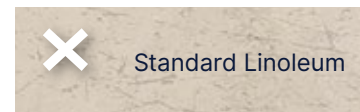
**Antivirale und antibakterielle Aktivität. Senkt die mikrobielle Keimbelastung (Bakterien, Viren, ...) und damit das Risiko einer Kontaminationskette.**

Excellent resistance against disinfection chemicals. Anti-viral and anti-bacterial activity. Contribute to lower the microbes load (bacteria, virus, ...) and to minimize the risk of contamination chain.

Excellente résistance contre les produits désinfectants et les agents chimiques. Activité antivirale et anti bactérienne. Contribue à réduire la charge microbienne (bactéries, virus, ...) et à minimiser les risques de chaîne de contamination.



## Langlebig Durable



Standard Linoleum



NEOCARE™

### BESTÄNDIG GEGEN MIKROVERKRATZUNGEN

Einpflegfrei und besonders strapazierfähig. Höhere Kratzfestigkeit.

### LEICHT ZU REPARIEREN

Partielle oder vollflächige Ausbesserung mit Spray-Cleaner und Einscheibenmaschine (Rotes Pad).

### MICRO SCRATCH RESISTANT

No sealing and waxing. Higher scratch resistance.

### EASY TO REPAIR

Local spray buffing with single-disk machine (Red disk).

### RÉSISTANT AUX MICRO RAYURES

Pas de métallisation. Plus résistant à la rayure.

### FACILITÉ DE RÉPARATION

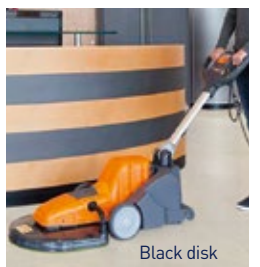
Polissage local par méthode spray avec une monobrosse (Disque rouge).

## Einpflege / Waxing / Metallisation

**NEOCARE™ ist ein Hochleistungsschutz gegen Schmutz, Flecken und Kratzer. Eine Einpflege ist nicht notwendig. Bei Bedarf kann aber eine zusätzliche Einpflege vorgenommen werden.**

NEOCARE™ is a high performing surface treatment protecting against dirt, stains and scratches and does not require any sealing & waxing throughout the life of the product. Waxing remains an option.

NEOCARE™ est une protection haute performance contre la saleté, les taches et les rayures qui ne requiert aucune action de métallisation durant toute la vie du produit. Si toutefois vous le souhaitez, vous pouvez métalliser.

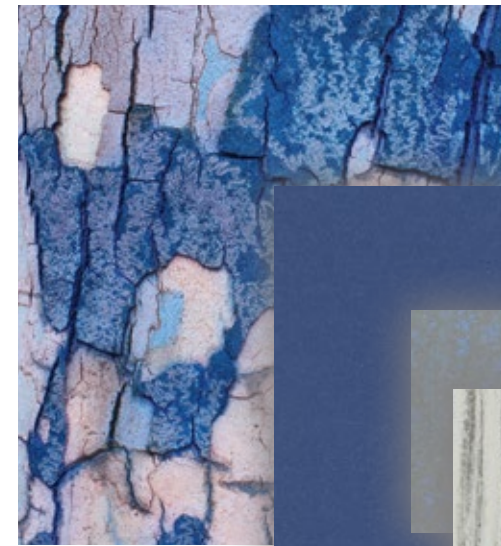


Black disk

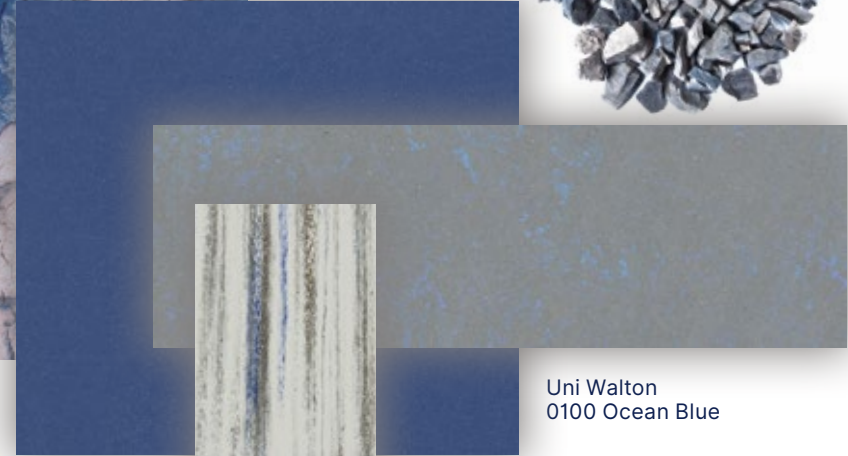


Uni Walton  
0100 Ocean Blue

Lino Art Flow  
0030 Rain



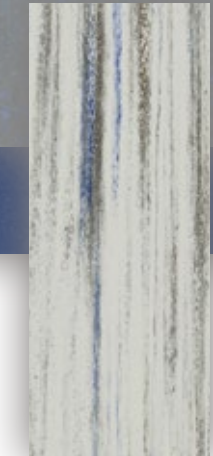
Lino Art Urban  
0566 Shining Blue



Uni Walton  
0100 Ocean Blue



Lino Art Flow  
0030 Rain



# Mix & Match

Visualize your project

[interiordesigner.gerflor.com](http://interiordesigner.gerflor.com)



Lino Art Urban  
0555 Flashy Street Grey



Lino Art Flow  
0024 Magma



Marmorette  
0117 Mandarin Orange

**EXCLUSIVE**



**Neuer exklusiver Oberflächenschutz für Linoleum**  
 New exclusive surface protection for DLW Linoleum  
 Nouvelle protection de surface exclusive pour le linoléum

**Wohngesund**  
 Healthy living  
 Sain

**Natürliches Design**  
 Natural design  
 Décor naturel

**Einfache Reinigung**  
 Easy to maintain  
 Facile d'entretien

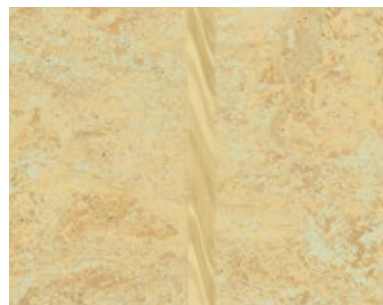
**Langlebig**  
 Durable

**Hygienische Sauberkeit**  
 Hygiene  
 Hygiène



[www.gerflor.com](http://www.gerflor.com)

**Camouflage**



**Marmorette & Linodur**  
 Camouflage Schmelzdraht:  
 nahezu unsichtbare  
 Verbindung der Bahnen  
 Camouflage welding rod:  
 invisible joints.  
 Cordon de soudure  
 Camouflage :  
 joints invisibles.

**Uni**



**Colorette & Uni Walton**  
 Uni Schmelzdraht:  
 perfekte Abstimmung auf  
 den Grundton des  
 Bodenbelags  
 Uni welding rod:  
 a large palette of colours.  
 Cordon de soudure Uni :  
 large palette de couleurs.

**Acoustic**

4 mm

**Marmorette Acoustic**

**A** 15 dB in stock



**Marmorette Acoustic Plus**

**A+** 19 dB in stock



**Colorette Acoustic Plus**

**A+** 19 dB in stock



**Uni Walton Acoustic Plus**

**A+** 19 dB in stock



**Marmorette, Colorette, Uni Walton**

Alle weiteren Farben können als Acoustic 15 dB Version hergestellt werden. Mindestbestellmenge: 1500 m<sup>2</sup>, unter 1500 m<sup>2</sup> verwenden Sie die Korkment-Unterlage.  
 All colours can be manufactured in Acoustic 15 dB version - Minimum order quantity: 1500 sqm. Below 1500 sqm, use Korkment underlayer.  
 Version Acoustic 15 dB disponible pour tous les coloris - Minimum 1500 m<sup>2</sup>. En dessous de 1500 m<sup>2</sup>, utiliser la sous-couche Korkment.

Alle weiteren Farben können als AcousticPlus 19 dB Version hergestellt werden. Mindestbestellmenge: 58 m<sup>2</sup>  
 All colours can be manufactured in AcousticPlus 19 dB version - Minimum order quantity: 58 sqm  
 Version AcousticPlus 19 dB disponible pour tous les coloris - Minimum 58 m<sup>2</sup>

**Linodur**



**Marmorette LCH**

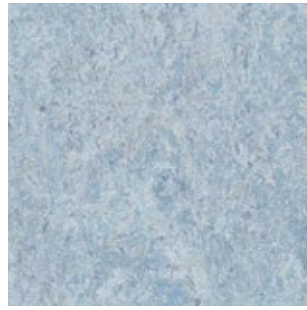
2,5 mm



# Marmorette



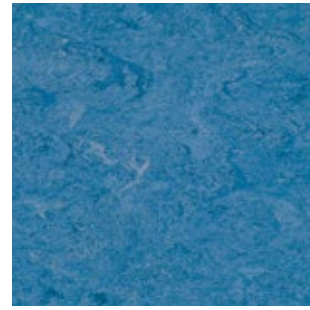
**0211 Pink**  
2,5 mm  
NCS: 1030-R / LRV: 42,1



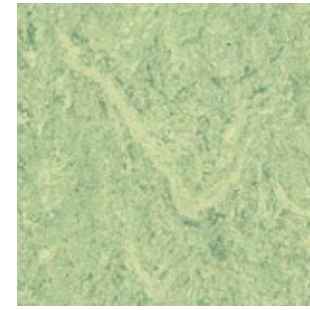
**0121 Blue Eyes**  
2,5 mm  
NCS: 3010-R80B / LRV: 39,0



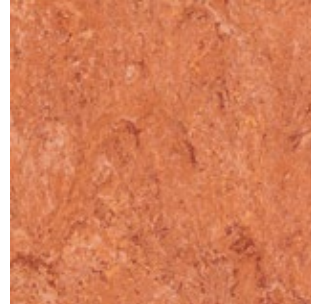
**0122 Fluffy Blue**  
2,5 mm  
NCS: 4030-B / LRV: 21,6



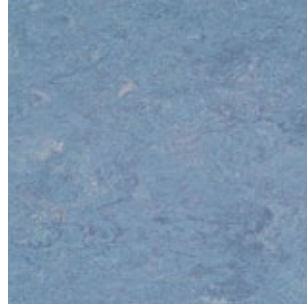
**0026 Sky Blue**  
2,5 mm  
NCS: 4030-R90B / LRV: 19,7



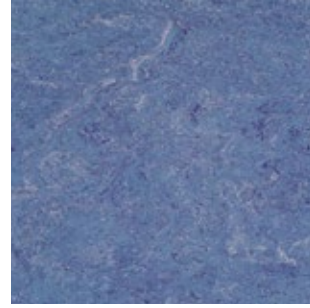
**0130 Antique Green** A+  
2,5 mm  
NCS: 2020-G50Y / LRV: 45,5



**0019 Sunset Orange** A  
2,5 mm  
NCS: 2040-Y70R / LRV: 27,3



**0023 Dusty Blue** A A+  
2,0 mm / 2,5 mm / 3,2 mm  
NCS: 3020-R90B / LRV: 30,0



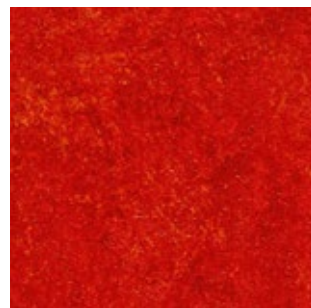
**0049 Royal Blue**  
2,5 mm / 3,2 mm  
NCS: 5020-R70B / LRV: 17,8



**0022 Autumn Blue** A+  
2,5 mm / 3,2 mm  
NCS: 5010-R90B / LRV: 20,6



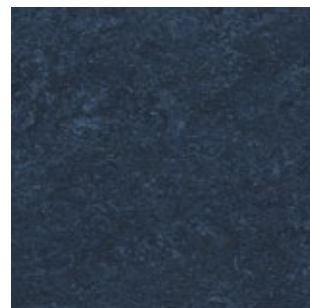
**0100 Frog Green**  
2,5 mm  
NCS: 3030-G40Y / LRV: 31,4



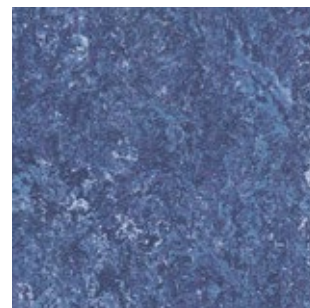
**0118 Chili Red**  
2,5 mm  
NCS: 2070-Y90R / LRV: 12,5



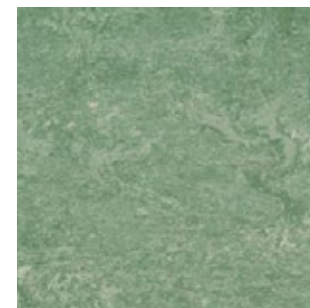
**0224 Mystery Blue**  
2,5 mm  
NCS: 6020-R90B / LRV: 13,0



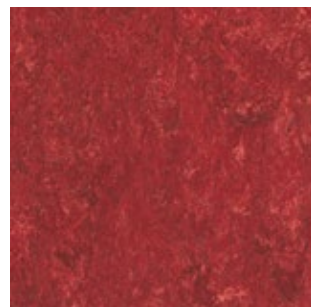
**0149 Dark Blue**  
2,5 mm  
NCS: 8010-R70B / LRV: 7,2



**0148 Ink Blue**  
2,5 mm  
NCS: 6020-R70B / LRV: 10,8



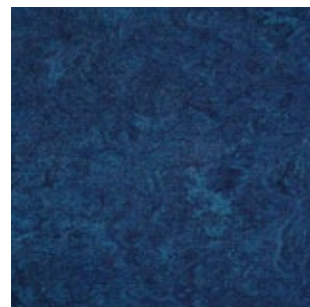
**0043 Leaf Green**  
2,5 mm  
NCS: 3020-G10Y / LRV: 31,6



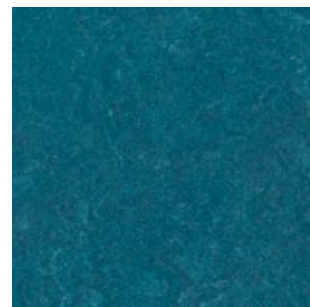
**0018 Lobster Red**  
2,5 mm  
NCS: 3060-R / LRV: 10,6



**0128 Violet**  
2,5 mm  
NCS: 4030-R60B / LRV: 13,8



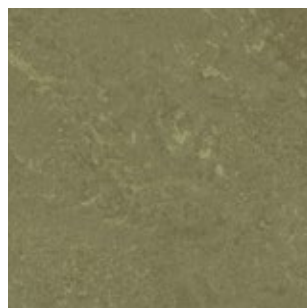
**0028 Dive**  
2,5 mm  
NCS: 6020-R80B / LRV: 9,4



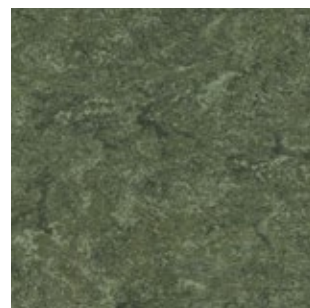
**0136 Turquoise Bay**  
2,5 mm  
NCS: 6030-B10G / LRV: 9,0



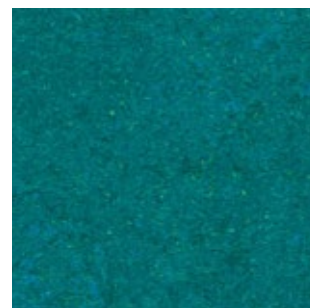
**0132 Lime Green**  
2,5 mm  
NCS: 2050-G60Y / LRV: 38,1



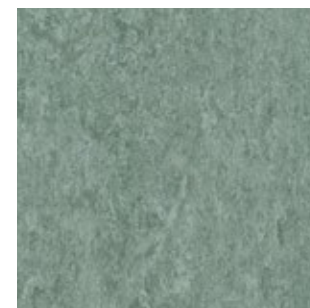
**0138 Khaki**  
2,5 mm  
NCS: 5020-G90Y / LRV: 19,9



**0083 Jungle**  
2,5 mm  
NCS: 6010-G50Y / LRV: 14,9

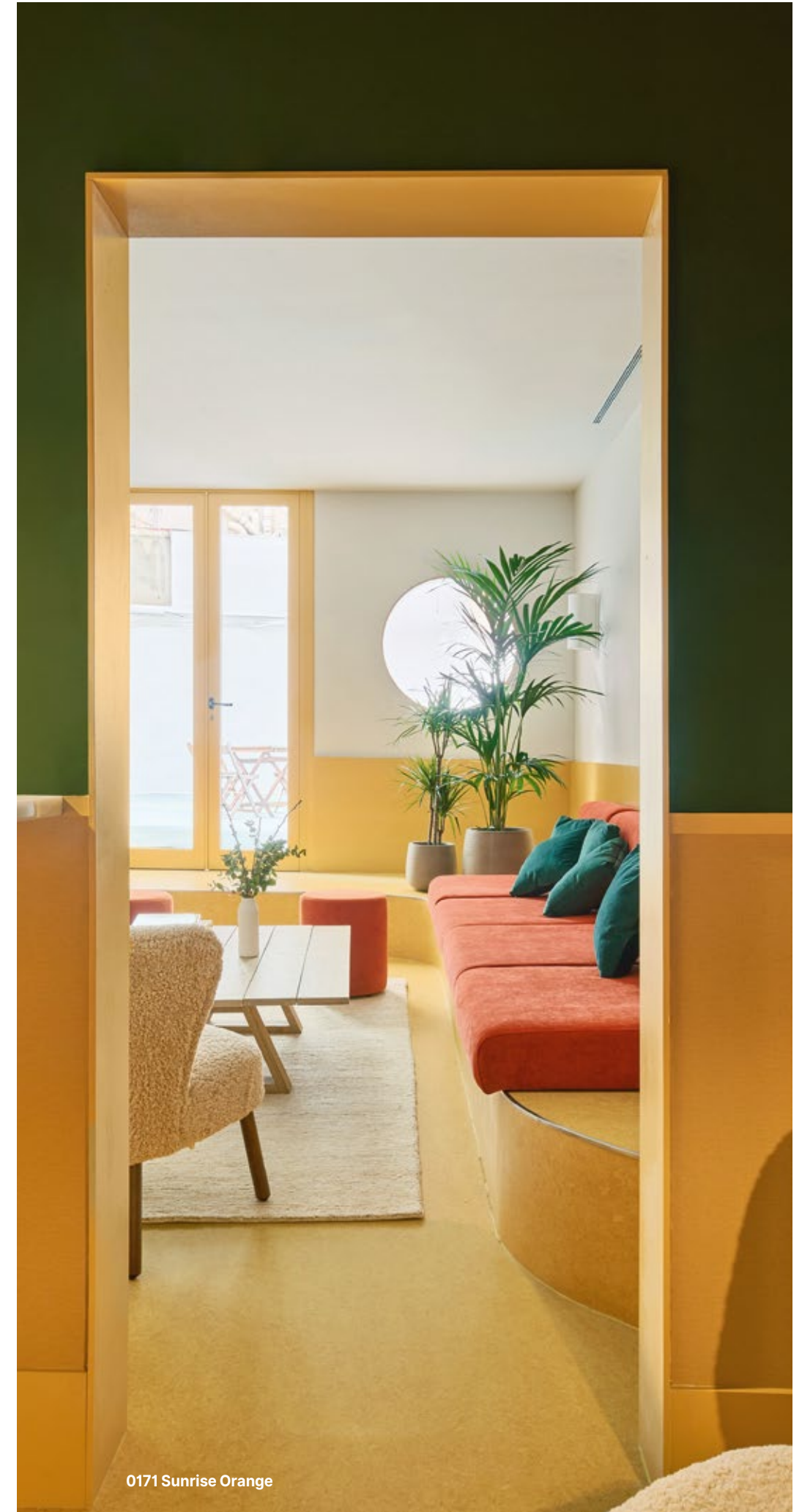


**0129 Curacao Petrol**  
2,5 mm  
NCS: 4040-B60G / LRV: 16,8



**0099 Grey Turquoise**  
2,5 mm  
NCS: 4010-B70G / LRV: 27,0

# Marmorette

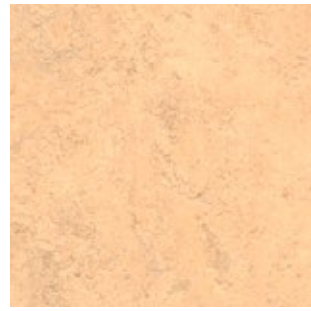


0171 Sunrise Orange

# Marmorette



**0045 Sand Beige**  
2,0 mm / 2,5 mm  
NCS: 2005-Y50R / LRV: 53,2



**0243 Marble Beige**  
2,5 mm  
NCS: 2010-Y30R / LRV: 48,8



**0098 Desert Beige**  
2,5 mm  
NCS: 2020-Y40R / LRV: 49,9



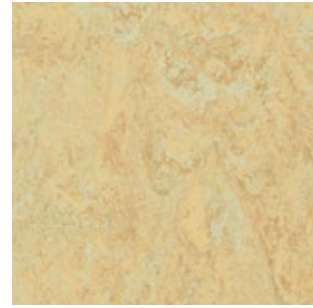
**0075 Light Aurora**  
2,5 mm  
NCS: 2030-Y60R / LRV: 40,2



**0146 Beeswax Beige**  
2,5 mm  
NCS: 3010-Y50R / LRV: 41,0



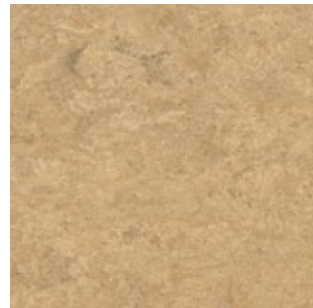
**0092 Beach**  
2,5 mm  
NCS: 3010-Y30R / LRV: 38,6



**0040 Light Sahara**  
2,0 mm / 2,5 mm  
NCS: 1515-Y30R / LRV: 52,7



**0073 Spicy Orange**  
2,5 mm  
NCS: 3040-Y50R / LRV: 24,7



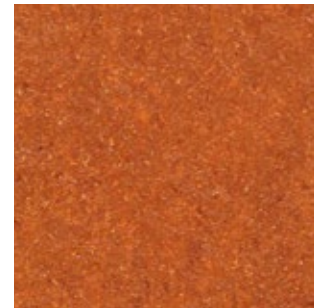
**0042 Shortcrust**  
2,5 mm  
NCS: 3020-Y30R / LRV: 31,3



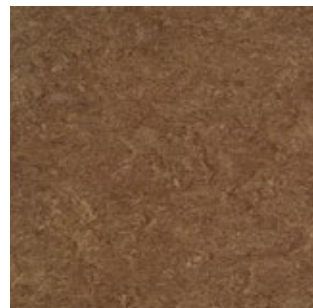
**0070 Rocky Brown**  
2,0 mm / 2,5 mm / 3,2 mm  
NCS: 2020-Y40R / LRV: 40,2



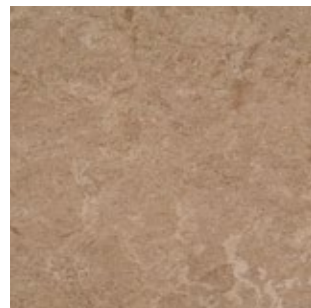
**0076 Pale Yellow**  
2,5 mm  
NCS: 2030-Y10R / LRV: 49,6



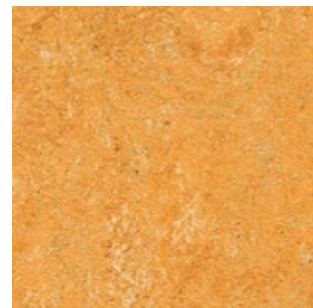
**0119 Terracotta**  
2,5 mm  
NCS: 3060-Y60 / LRV: 18,1



**0089 Peacan Pie**  
2,5 mm  
NCS: 6010-Y70R / LRV: 15,2



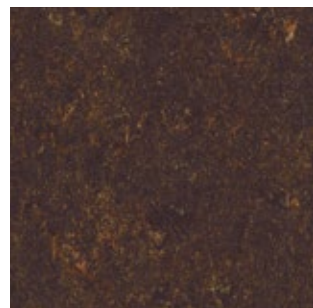
**0090 Soapstone**  
2,5 mm  
NCS: 4010-Y70R / LRV: 28,2



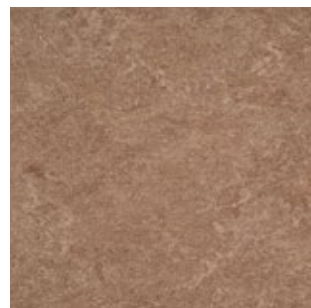
**0173 Melon Orange**  
2,5 mm  
NCS: 2040-Y30R / LRV: 38,6



**0117 Mandarin Orange**  
2,5 mm  
NCS: 2070-Y60R / LRV: 18,8



**0108 Mokka Brown**  
2,5 mm  
NCS: 8005-Y80R / LRV: 6,8



**0003 Dark Brown**  
2,5 mm  
NCS: 5010-Y50R / LRV: 23,0



**0072 Golden Yellow**  
2,5 mm  
NCS: 2040-Y20R / LRV: 41,0



**0172 Papaya Orange**  
2,5 mm  
NCS: 1080-Y20R / LRV: 33,1

# Marmorette



**0164 Milk Coffee**  
2,5 mm  
NCS: 5010-Y50R / LRV: 18,9



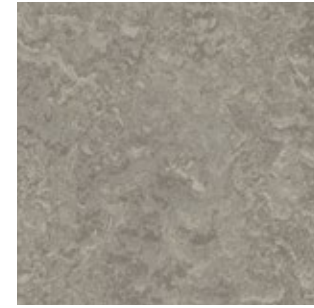
**0106 Hazelnut Shake**  
2,5 mm  
NCS: 4010-Y50R / LRV: 26,6



**0251 Cream**  
2,5 mm  
NCS: 1505-Y10R / LRV: 52,9



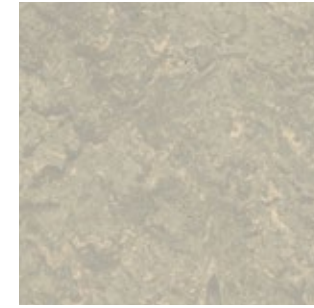
**0145 Banana White**  
2,5 mm  
NCS: 1510-Y30R / LRV: 60,4



**0166 Clay**  
2,5 mm  
NCS: 4005-Y20R / LRV: 28,4



**0091 Shiitake Mushroom**  
2,5 mm  
NCS: 2010-Y80R / LRV: 41,6



**0253 Pebble Grey**  
2,5 mm  
NCS: 3005-Y20R / LRV: 44,7



**0252 Light Grey**  
2,5 mm  
NCS: 2002-Y / LRV: 49,8



**0155 Smoked Pearl**  
2,5 mm  
NCS: 2005-Y90R / LRV: 44,6



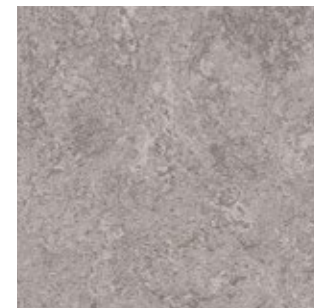
**0056 Foggy Blue**  
2,5 mm / 3,2 mm  
NCS: 4005-Y50R / LRV: 31,8



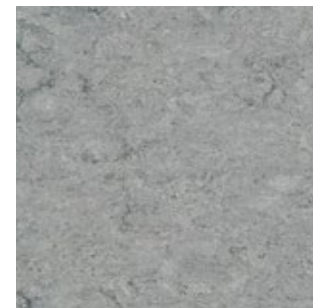
**0055 Ash Grey**  
2,0 mm / 2,5 mm / 3,2 mm  
NCS: 3502-B / LRV: 39,0



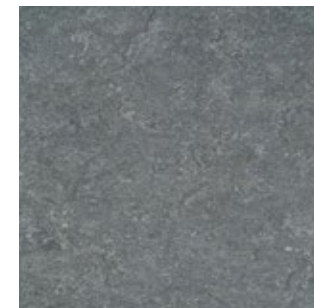
**0054 Concrete Patty**  
2,5 mm  
NCS: 5500-N / LRV: 20,5



**0153 Greystone Grey**  
2,5 mm  
NCS: 4502-Y / LRV: 29,5



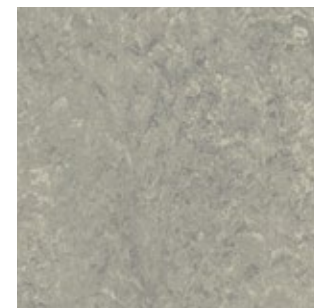
**0053 Ice Grey**  
2,0 mm / 2,5 mm / 3,2 mm  
NCS: 4000-N / LRV: 31,2



**0050 Quartz Grey**  
2,0 mm / 2,5 mm / 3,2 mm  
NCS: 5502-R / LRV: 20,7



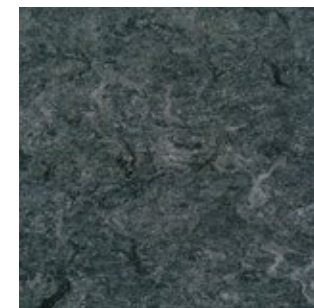
**0160 Industrial Grey**  
2,0 mm / 2,5 mm  
NCS: 7502-R / LRV: 10,3



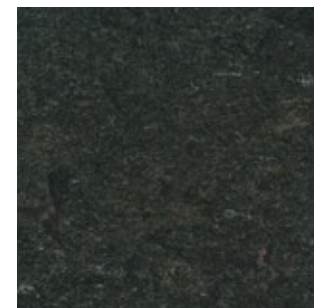
**0254 Mineral Grey**  
2,5 mm  
NCS: 3502-Y / LRV: 34,3



**0158 Tabac Grey**  
2,5 mm  
NCS: 6502-R / LRV: 14,8



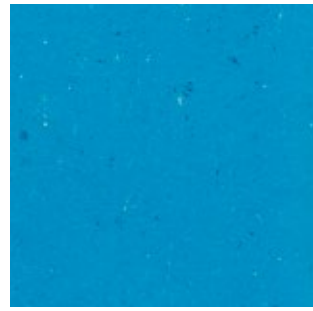
**0059 Plumb Grey**  
2,0 mm / 2,5 mm / 3,2 mm  
NCS: 7005-R50B / LRV: 11,3



**0096 Midnight Grey**  
2,5 mm  
NCS: 8000-N / LRV: 7,3

# Colorette

2,5 mm



**0123 Poppy Blue**  
NCS: 1560-R90B / LRV: 21,9



**0071 Straw Beige**  
NCS: 2020-Y30R / LRV: 46,3



**0073 Sand Yellow**  
NCS: 2040-Y30R / LRV: 44,8



**0016 Deep Orange**  
NCS: 2050-Y60R / LRV: 27,7



**0004 Bluebird**  
NCS: 4040-R80B / LRV: 18,6



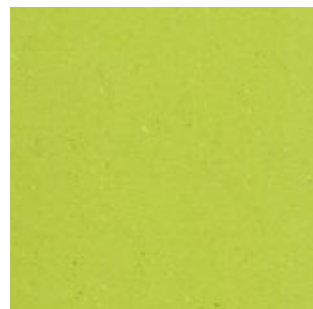
**0171 Sunrise Orange**  
NCS: 1070-Y30R / LRV: 40,7



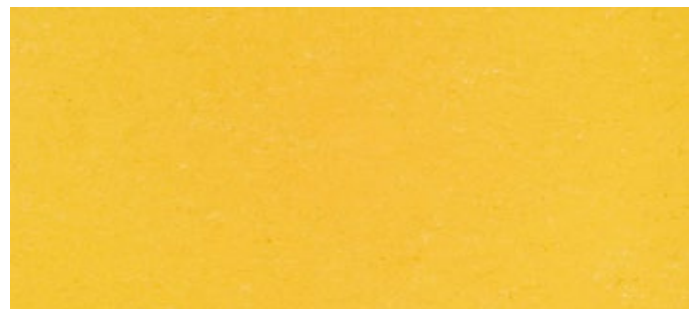
**0170 Kumquat Orange**  
NCS: 1070-Y60R / LRV: 26,9



**0118 Power Red**  
NCS: 1070-Y90R / LRV: 18,9



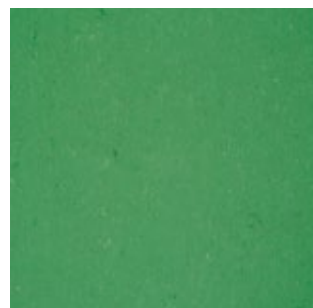
**0132 Spicy Green** A+  
NCS: 1060-G50 / LRV: 44,1



**0001 Banana Yellow** A+  
NCS: 1070-Y / LRV: 45,7



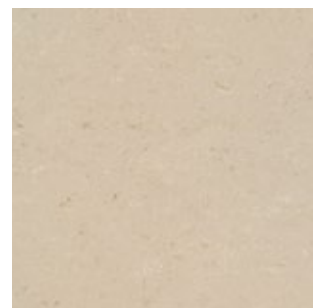
**0110 Cadillac Pink**  
NCS: 2050-R30B / LRV: 23,9



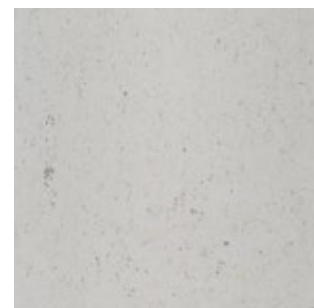
**0006 Vivid Green**  
NCS: 3040-G20Y / LRV: 24,9



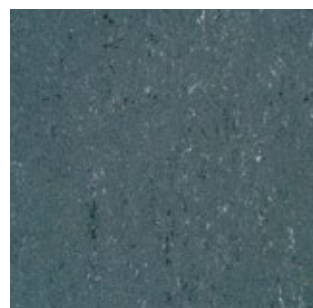
**0058 Aluminium Grey**  
NCS: 3502-R / LRV: 36,6



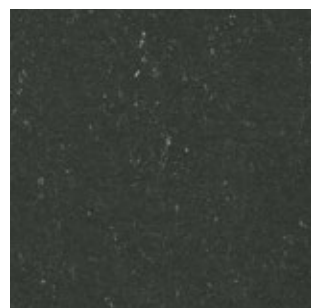
**0012 Light Beige** A+  
NCS: 3010-Y20R / LRV: 40,2



**0052 Oxid Grey** A+  
NCS: 2502-Y / LRV: 47,0



**0080 Elephant Grey** A+  
NCS: 6502-B / LRV: 13,5



**0081 Private Black**  
NCS: 8502-B / LRV: 7,3



**0043 Light Mud**  
NCS: 5010-Y30R / LRV: 25,6



**0059 Stone Grey** A+  
NCS: 5500-N / LRV: 22,2

# Uni Walton

2,5 mm



**0062 Mediterranean Orange**  
NCS: 3060-Y60R / LRV: 16,4



**0043 Neutral Beige**  
NCS: 1515-Y30R / LRV: 51,1



**0059 Frost Grey**  
NCS: 1502-Y / LRV: 59,6



**0095 Spring Blue** A+  
NCS: 3030-B / LRV: 29,1



**0010 Pompeji Red** A+  
NCS: 2070-Y90R / LRV: 14,1



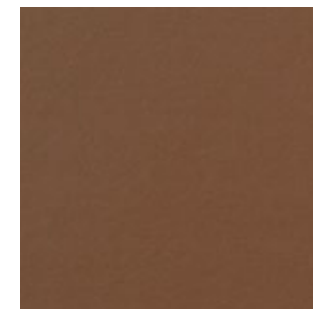
**0088 Chestnut**  
NCS: 5040-Y80R / LRV: 9,1



**0081 Nickel Grey**  
NCS: 3502-B / LRV: 31,5



**0100 Ocean Blue**  
NCS: 5040-R80B / LRV: 8,8



**0060 Deep Brown**  
NCS: 7020-Y60R / LRV: 9,2



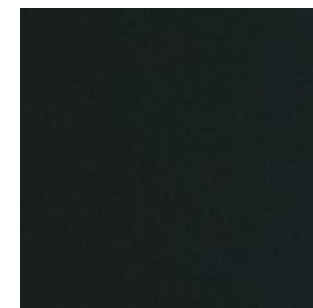
**0058 Clay Grey** A+  
NCS: 6005-Y20R / LRV: 15,8



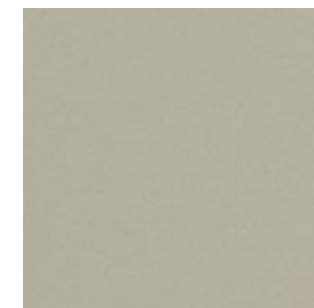
**0082 Broken Grey**  
NCS: 5502-R / LRV: 20,7



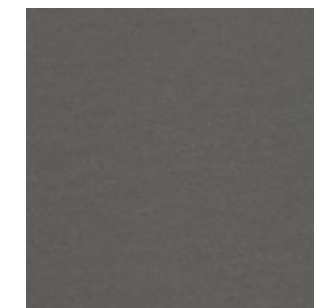
**0090 Olive** A+  
NCS: 4020-G90Y / LRV: 22,3



**0080 Black**  
NCS: 8505-R80B / LRV: 4,8



**0085 Warm Concrete Grey** A+  
NCS: 3005-Y20R / LRV: 35,7

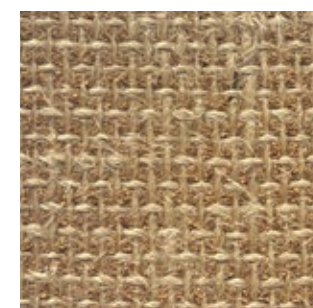


**0083 Architects Grey** A+  
NCS: 7500-N / LRV: 10,9



**0035 Racing Green** A+  
NCS: 8005-B80G / LRV: 7,6

## Acoustic 15 dB

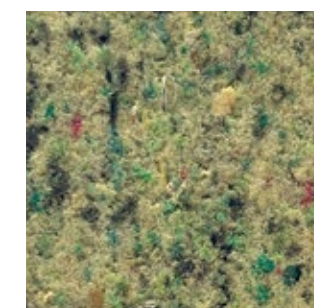


2 mm linoleum + 2 mm cork



0102 Korkment Underlayer









## Acoustic Plus 19 dB



2,5 mm linoleum + 1,5 mm recycled foam



# Technical data

				Marmorette		Colorette / Uni Walton	Marmorette Acoustic	Marmorette Acoustic Plus Colorette Acoustic Plus Uni Walton Acoustic Plus	Linodur	Marmorette LCH
<b>Konstruktion / Description / Structure</b>										
<b>Gesamtdicke</b> / Total thickness / Epaisseur totale	EN ISO 24346	mm	2,0 / 2,5 / 3,2	R10	Bfl-s1	2,5	4,0	4,0	4,0	2,5
<b>Unterschicht</b> / Backing / Envers	-	-	-	Jutegewebe / Jute fabric / Toile de jute	-	Jutegewebe / Jute fabric / Toile de jute	Kork- und Juterücken / Cork and jute fabric backing / Envers liège et toile de jute	Schaumrücken / Foam backing / Envers mousse	Jutegewebe / Jute fabric / Toile de jute	Jutegewebe / Jute fabric / Toile de jute
<b>Dicke der Unterschicht</b> / Thickness of cork/foam backing / Epaisseur sous-couche	EN ISO 24340	-	-	-	-	-	2	1,5	-	-
<b>Gesamtgewicht</b> / Weight / Poids	EN ISO 23997	g/sqm	2400 / 2900 / 3800	2900	2900	2900	3900	3500	4700	3000
<b>Rollenbreite</b> / Width of sheet / Largeur des lés	EN ISO 24341	cm	-	200	-	200	200	200*	200	200
<b>Rollenlänge</b> / Length of sheet / Longueur des lés	EN ISO 24341	m	-	20-31	-	20-31	20-31	20-31*	app. 28	20 - 31
<b>Klassifizierung / Classification / Classification</b>										
<b>Norm/Produktbeschreibung</b> / Norm/Product specification / Norme/Spécification produit	-	-	-	EN ISO 24011	-	EN ISO 24011	EN 687	EN 686	EN ISO 24011	EN ISO 24011
<b>Europäisches Klassifizierung</b> / European classification / Classement européen	EN ISO 10874	class	-	23 / 34 / 43 23 / 32 / 41 in 2,0 mm	-	23 / 34 / 43	23 / 33 / 41	23 / 33 / 41	23 / 34 / 43	23 / 34 / 43
Classement UPEC	QB 30	-	-/U4P3E1/2C2	-	-	U4P3E1/2C2	-	U4P3E1/2C2	-	-
Certification  UPEC /  UPECA (www.evaluation.cstb.fr)	QB 30	-	-/N°367-001	-	-	N°367-001	-	N°367-002	-	-
<b>Brandverhalten</b> / Fire rating / Réaction au feu**	EN 13501-1	class	-	Cfl-s1	Bfl-s1	Cfl-s1	Cfl-s1	Cfl-s1	Cfl-s1	Cfl-s1
<b>Rutschsicherheit</b> / Slip resistance / Glissance	EN 16165 App B (DIN 51130)	class	R9	R10	R9	R9	R9	R9	R10	R9
<b>Trittschallverbesserungsmass</b> / Impact sound insulation / Réduction au bruit d'impact	EN ISO 717-2	dB	3 dB / 5 dB / 6 dB	5 dB	5 dB	5 dB	15 dB	19 dB	8 dB	3 dB
<b>Funktion / Performances / Performances</b>										
<b>Resteindruck</b> / Residual indentation / Poinçonnement statique rémanent	EN ISO 24343-1	mm	≤ 0,09 / ≤ 0,11	≤ 0,11	≤ 0,11	≤ 0,11	≤ 0,40	≤ 0,30	≤ 0,20	≤ 0,15
<b>Farbechtheit</b> / Colour fastness / Solidité lumière	EN ISO 105 - B02	Stufe / rating / classement	-	≥ 6	-	≥ 6	≥ 6	≥ 6	≥ 6	≥ 6
<b>Durchgangswiderstand</b> / Vertical resistance / Résistance électrique transversale	EN 1081	Ohm	-	-	-	-	-	-	-	10 <sup>6</sup> ≤ R ≤ 10 <sup>8</sup>
<b>Standortisolation</b> / Point contact resistance / Résistance de contact ponctuel	VDE 0100	kOhm	-	> 200	> 200	> 200	> 200	> 200	> 200	> 100
<b>Aufladungsspannung Begehtest</b> / Static electrical propensity / Potentiel de charge	EN 1815	kV	-	≤ 2	≤ 2	≤ 2	≤ 2	≤ 2	≤ 2	≤ 2
<b>Stuhlrolleneignung (Typ W)</b> / Castor chair test (Type W) / Essai de la chaise à roulettes (Type W)	ISO 4918	-	-	Geeignet / OK / Approprié	-	Geeignet / OK / Approprié	Geeignet / OK / Approprié	Geeignet / OK / Approprié	Geeignet / OK / Approprié	Geeignet / OK / Approprié
<b>Biagsamkeit</b> / Flexibility / Flexibilité	ISO 24344	mm	-	Ø 40 (2,5 mm)	-	Ø 40	Ø 60	Ø 40	Ø 60	Ø 40
<b>Biagsamkeit</b> / Flexibility / Flexibilité: durchschnittlicher Messwert / average measured value / valeur moyenne mesurée	ISO 24344	mm	-	Ø 30 (2,5 mm)	-	Ø 30	Ø 30	Ø 35	Ø 50	Ø 30
<b>Wärmedurchlasswiderstand</b> / Thermal resistance / Résistance thermique	EN 12667	(m <sup>2</sup> /K)/W	0,012 / 0,015 / 0,018	0,015	0,015	0,015	0,04	0,044	0,023	0,015
<b>Wärmeableitung</b> / Thermal conductivity / Conductivité thermique	EN ISO 10456	W/(m.K)	-	0,17	-	0,17	0,17	0,0937	0,17	0,17
<b>Oberflächenvergütung</b> / Surface treatment / Traitement de surface	-	-	-	Neocare™	-	Neocare™	Neocare™	Neocare™	Neocare™	Neocare™
<b>Chemikalienbeständigkeit</b> / Chemical products resistance / Résistance aux produits chimiques	EN ISO 26987	-	-	Exzellent / Excellent	-	Exzellent / Excellent	Exzellent / Excellent	Exzellent / Excellent	Exzellent / Excellent	Exzellent / Excellent
<b>Antibakterielle Aktivität (E. coli – S. aureus – MRSA) nach 24 Std</b> / Anti-bacterial activity (E. coli – S. aureus – MRSA) after 24 h / Activité antibactérienne (E. coli – S. aureus – MRSA) après 24 h ***	EN ISO 22196 / JIS Z 2801	-	-	-	-	> 99,99 % Wachstumshemmend / > 99,99 % inhibits growth / > 99,99 % ne favorise pas la prolifération	-	-	-	-
<b>Antivirale Aktivität (Humanes Coronavirus) nach 5 Std</b> / Anti-viral activity (Human coronavirus) after 5 h / Activité antivirale (Coronavirus humain) après 5 h ***	ISO 21702	-	-	-	-	> 98,65 % Viruzide Aktivität / > 98,65 % virucidal activity / > 98,65 % activité virucide	-	-	-	-
<b>Qualität der Raumluft / Indoor Air Quality / Qualité de L'air Interieur</b>										
<b>TVOC nach 28 Tagen</b> / TVOC after 28 days / TCOV après 28 jours	EN 16516	microgram / m <sup>3</sup>	-	< 10	-	< 10	< 10	< 10	< 50	< 10
<b>Kreislaufwirtschaft / Circular Economy / Economie Circulaire</b>										
<b>Zertifizierung</b> / Certification / Certification	Cradle to Cradle	-	-	Silver	-	Silver	Silver	Bronze	Silver	-
<b>CE-Kennzeichnung / CE Marking / Marquage CE</b>										
	EN 14041 : 2004 AC : 2006	-	-	-	-					

\* Rollengröße für SRP Artikelcode / Dimension du rouleau pour SRP code de l'article / Roll dimension for SRP article code: R929/R930/R931/R932/R934/R935/R995: 1,96m x 18-29lm

\*\* Verklebt gemäß Zertifikat. DOP-Nummern erhalten Sie bei Ihrer lokalen Niederlassung. Glued according to certificate. DOP numbers available from your local branch. Encollage du revêtement suivant recommandation du certificat, voir www.gerflor.fr.

\*\*\* Die Umsetzung einer effektiven Reinigungsmethode ist der beste Schutz gegen Infektionen. The implementation of an effective cleaning method is the best defence against infection. Le respect des protocoles d'entretien des sols est la meilleure garantie contre les infections.

 **Je nach Lichteinwirkung kann sich die Produktfarbe durch den natürlichen Oxidationsprozess von Linoleum verändern. Wir empfehlen, die Muster mehrere Stunden dem direkten Sonnenlicht auszusetzen, um eine definitive Farbauswahl zu treffen. Dieser Vorgang ist reversibel.**

Depending on light exposure, the product colour can vary, due to linoleum natural oxidization process. This process is reversible. We recommend that the samples be exposed to sunlight for several hours prior to making a final colour choice.

L'absence de lumière et l'oxydation de l'huile de lin, altèrent les coloris par un processus de jaunissement. Ce processus est réversible : exposé à la lumière pendant quelques jours ou semaines, le linoléum retrouve sa couleur d'origine.



Sample Order

## DLW Linoleum, Creative by Nature

**Wir bei Gerflor** glauben, dass Architektur die Kraft hat, das Leben der Menschen zu verbessern. Da die Natur unsere größte Inspirationsquelle ist, bietet DLW Linoleum speziell Architekten eine Kollektion von 159 Farben mit einem natürlichen Design, um die Kreativität und Nachhaltigkeit ihrer Projekte zu unterstützen.


DLW Linoleum wird seit 1882 in Deutschland hergestellt und ist „Cradle to Cradle“ zertifiziert. Es besteht zu 98 % aus natürlichen Rohstoffen wie Leinöl, Holz, Kalkstein, Jute und Harz. Das ist unser Beitrag, Menschen mit der Natur in Einklang zu bringen.

***At Gerflor, we believe that architecture has the power to improve people's lives. Nature is our greatest source of inspiration. With the DLW Linoleum offer, we can provide architects with a collection of 159 colours, these are natural designs, that can enhance the sustainability and the creativity of their projects.***


***Made in Germany since 1882 and certified "Cradle to Cradle", the DLW Linoleum products are made of 98% natural materials including linseed oil, wood, limestone, jute and resin. It's simply our way of connecting people closer to nature.***

**Chez Gerflor, nous croyons que l'architecture a le pouvoir d'améliorer nos vies.** Parce que la nature est notre plus grande source d'inspiration, la collection Linoleum DLW offre aux architectes un ensemble de 159 coloris d'inspiration naturelle pour nourrir leur créativité et respecter l'environnement. Fabriqué en Allemagne depuis 1882 et certifié « Cradle to Cradle », le Linoleum DLW est composé à 98 % de matières naturelles, telles que huile de lin, poudre de bois, craie, jute ou résine. C'est notre façon de rapprocher les hommes de la nature.

## Mix and match COLLECTIONS



**DLW Lino Art**

Creative by Nature 

### We care / We act Our Commitments for a Sustainable future



**CARBON FOOTPRINT\***  
-20 % kg CO<sub>2</sub> equivalent/m<sup>2</sup> between 2020 and 2025



**BIOSOURCED CONTENT\*\***  
10 % by 2025



**RECYCLED CONTENT**  
30 % by 2025



**ADHESIVE FREE\*\*\***  
35 % by 2025



**ANNUAL VOLUME RECYCLED**  
60 000 t by 2025



\* Scopes 1 and 2 defined in the GHG protocol \*\* % of activity with biosourced materials \*\*\* % of activity - adhesive free solution